

## **KOMA FREEZING TUNNEL**

### **Koma Tunnel Freezer:**

*Length:* 14400 mm (6000 mm Koma Tunnel)  
*Belts Width:* 1860 mm  
*Belts:* 1 Belt (Stainless Steel)  
*Total Cooling capacity:* 112,2 kW at -30°C/+40°C  
*Remarks:* Belt is NEW

### **Condensing units DWM (first section):**

*Brand:* DWM  
*Type:* D9TH-1010-EWL (x2)  
*Capacity:* 18,8 kW at -30°C/+40°C  
*Including:* - Heat exchanger - Unloaded start - Solenoid valve  
- Liquid receiver - Oil separator  
*Sizes:* 2500x1150x1100 mm (LxWxH)  
*Pieces:* 3  
*Total capacity all three units together:* 56,4 kW at -30°C/+40°C

### **Compressor unit Bitzer (after-freeze (second) section; covered in panels, which are included):**

*Brand:* Bitzer  
*Type:* 6G-30.2  
*Total capacity:* 55,8 kW at -30°C/+40°C  
*y.o.b.* 2004  
*Including:* - Unloaded start - Liquid receiver - Control panel  
- Oil separator - Solenoid valve  
*Sizes:* 1800x1100x1800 mm (LxWxH)  
*Pieces:* 1 unit consisting of 2x compressor Bitzer 6G-30.2

### **Evaporators (first section):**

*Brand:* Koma  
*Capacity:* 7 kW per piece at freeze  
*Pieces:* 8

### **Evaporators (after-freeze (second) section; covered in panels, which are included):**

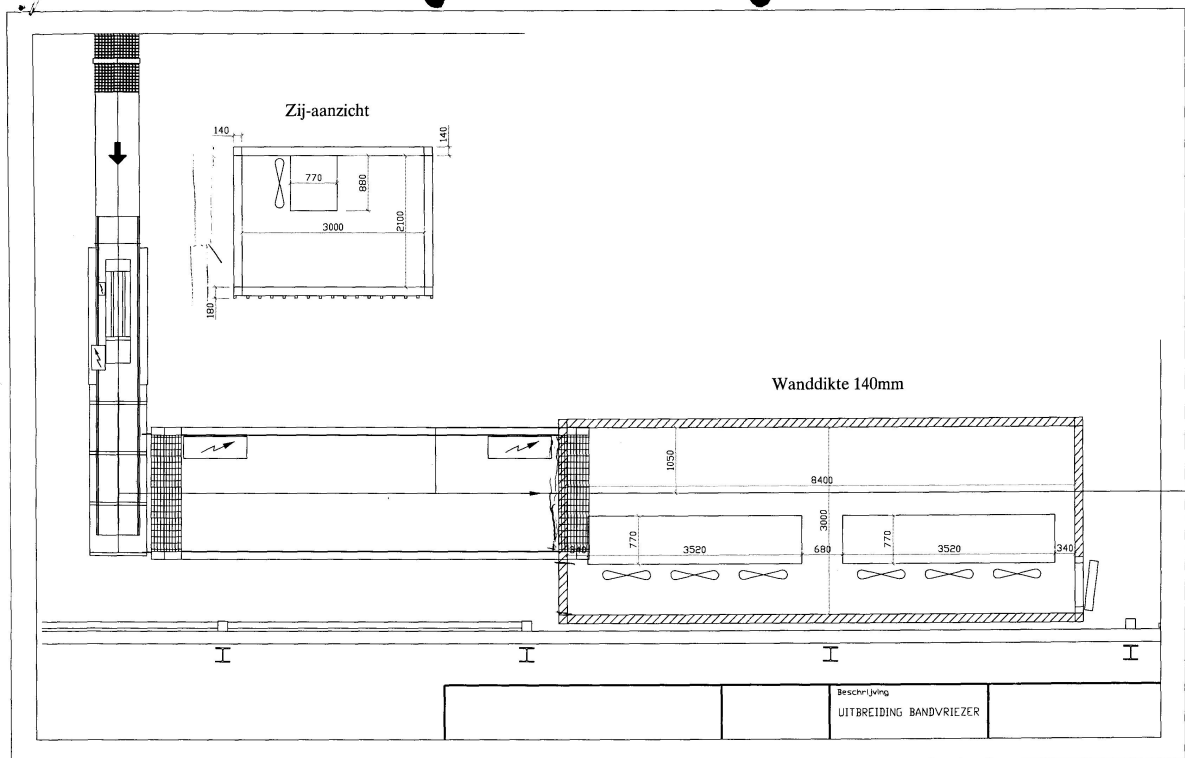
*Brand:* Helpman  
*Type:* THOR-B 436-10  
*Capacity:* 28 kW per piece at freeze  
*y.o.b.* 2004  
*Sizes:* 3500x1050x900 mm (LxWxH)  
*Pieces:* 2

### **Condenser (part of Bitzer 6G-30.2 unit):**

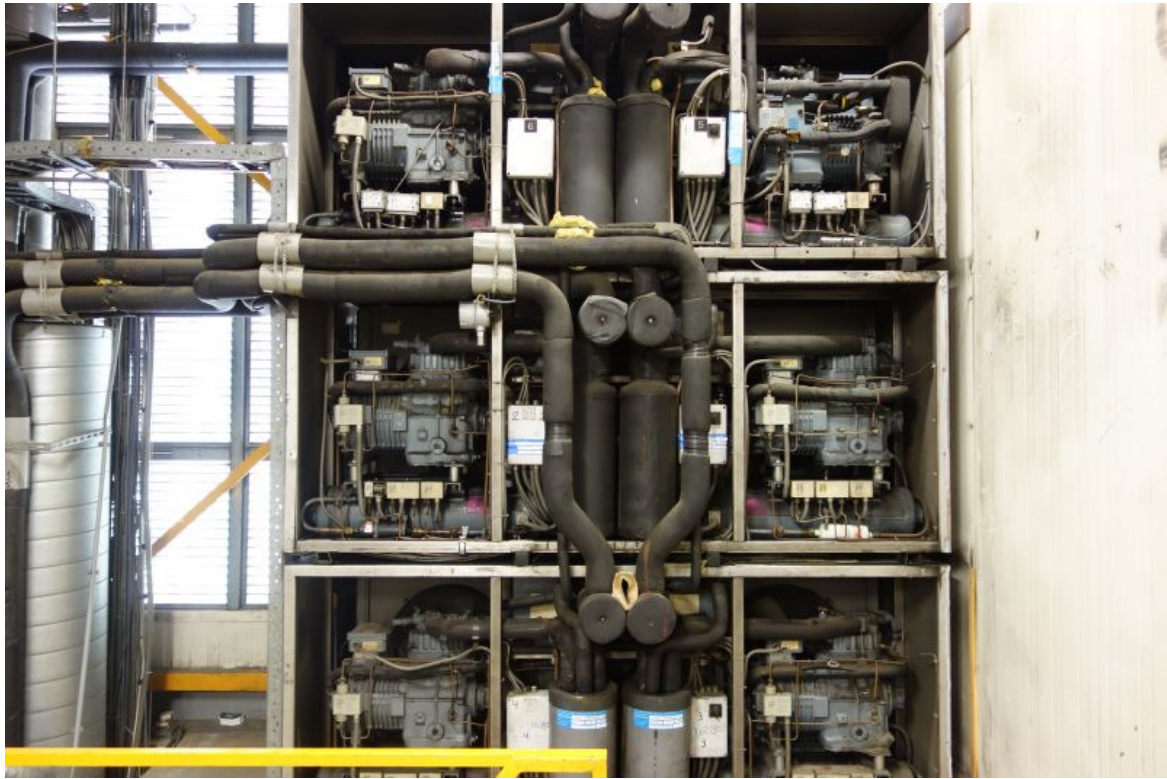
*Brand:* Lu-Ve  
*Type:* EAV8T 8130 V/H  
*Capacity:* 165 kW  
*Sizes:* 6950x750x1200 mm (LxWxH)  
*Pieces:* 1

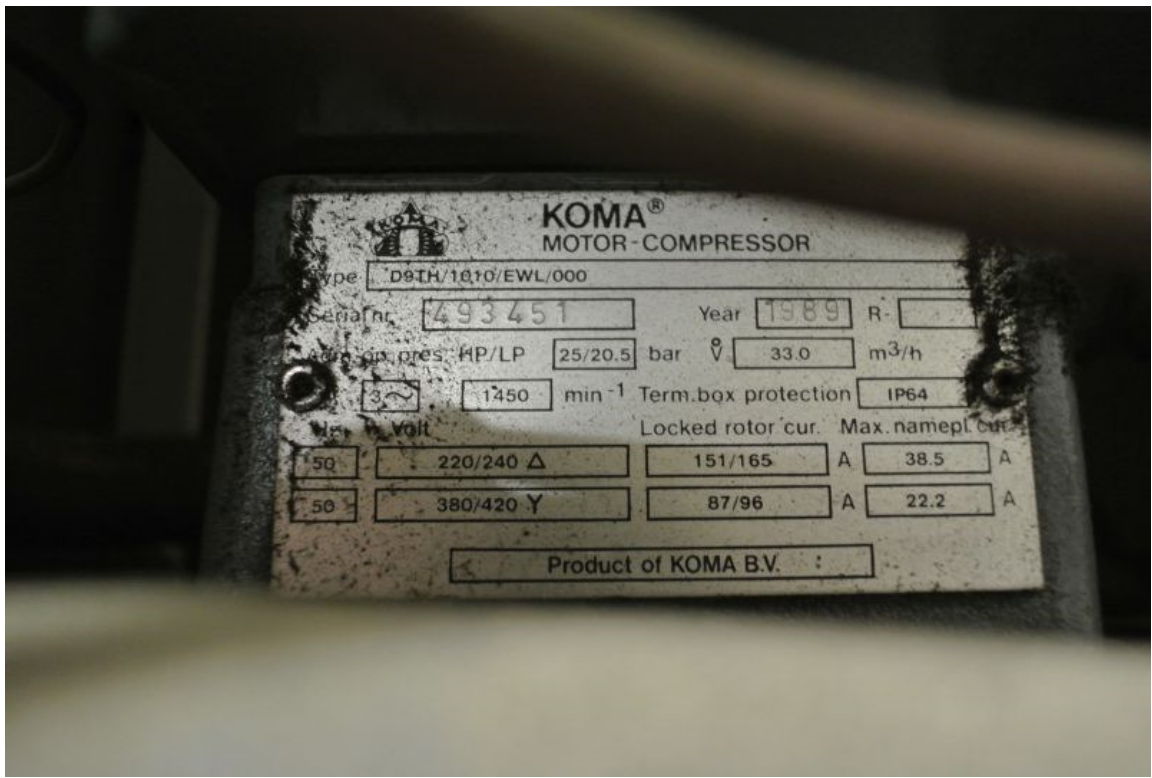








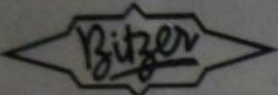













 Typ 6G-30.2Y-40P  
 S.Nr. 1666509582

**BITZER KÜHLMASCHINENBAU GMBH**  
 Made in E.C.



Spannung	Frequ.	Betr.strom	Anlaufstrom		Fördervol.	Drehzahl
3Ph	Hz	A (max.)	A (Y)	A (YY)	m <sup>3</sup> /h	min <sup>-1</sup>
380-420	50	53	135	220	126,8	1450
440-480	60	53	135	220	152,9	1750

54 ND/HD max. 19 / 28 bar

